

36W LED PANELS



MARKS, SYMBOLS & ICONS



NOTES

Use suffix **/EM** for 3hr Emergency option.

Use suffix **/DALI** for DALI dimmable option.

Use suffix **/DALI-EM** for DALI, 3hr Emergency option.

GENERAL DATA

Order codes: **AP-36-3K**
AP-36-4K
AP-36-5K
AP-36-6K

Colour: **(B) White**

Body: **Aluminium**

Lens: **Polycarbonate**

Mounting: **Ceiling or built-in**

Lamp: **LED**

UGR: **<21**

DALI: **Yes**

Size mm: **595 x 595 x 10**

Weight: **3 kg**

PHOTOMETRICAL INFO

Beam Angle **120°**

ELECTRICAL SPECIFICATIONS

Input: **220-240 VAC**

Power: **36W**

Power Factor: **0.9**

IP Grade: **IP 40**

Electrical Class: **II**

LED SPECIFICATIONS

CRI: **Ra ≥80**
(Colour Rendering Index)

Lumens: **3K - 3350 lm**
4K - 3400 lm
5K - 3450 lm
6K - 3500 lm

CCT: **3000, 4000K & 5000K, 6000K**
(Correlated Colour Temp.)

Rated Life: **30.000 hours**



**3 Year
Warranty***

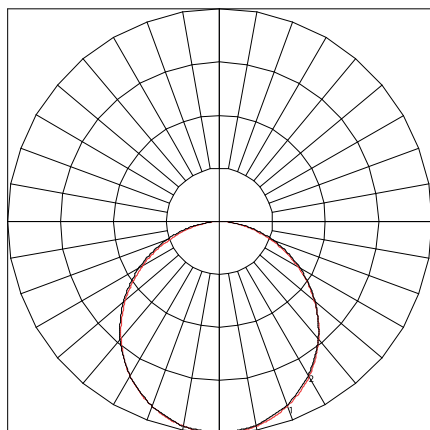
*Full warranty policy details are available upon request and are also viewable on our website.

Photometric Data

Part Code	Lumens	LPW	Rated Life (Hrs)	L80 B50 @ Ta Max (Hrs)	CCT (K)	CRI (Ra)	Beam (°)	UGR
AP-36-3K	3350	84	30,000	33,000	3000	>80	120	<21
AP-36-4K	3400	85	30,000	33,000	4000	>80	120	<21
AP-36-5K	3450	86	30,000	33,000	5000	>80	120	<21
AP-36-6K	3500	87	30,000	33,000	6000	>80	120	<21

Panel Kits

Standard	With Driver
/DALI	With DALI / Switch Dim / 1-10V
/EM	With Driver + 3W Remote Emergency Pack
/DALI-EM	With DALI / Switch Dim / 1-10V + Emergency



1 - Vertical Plane Through Horizontal Angles (0°-180°) (Through Max. Cd.)
2 - Vertical Plane Through Horizontal Angles (90°-270°)

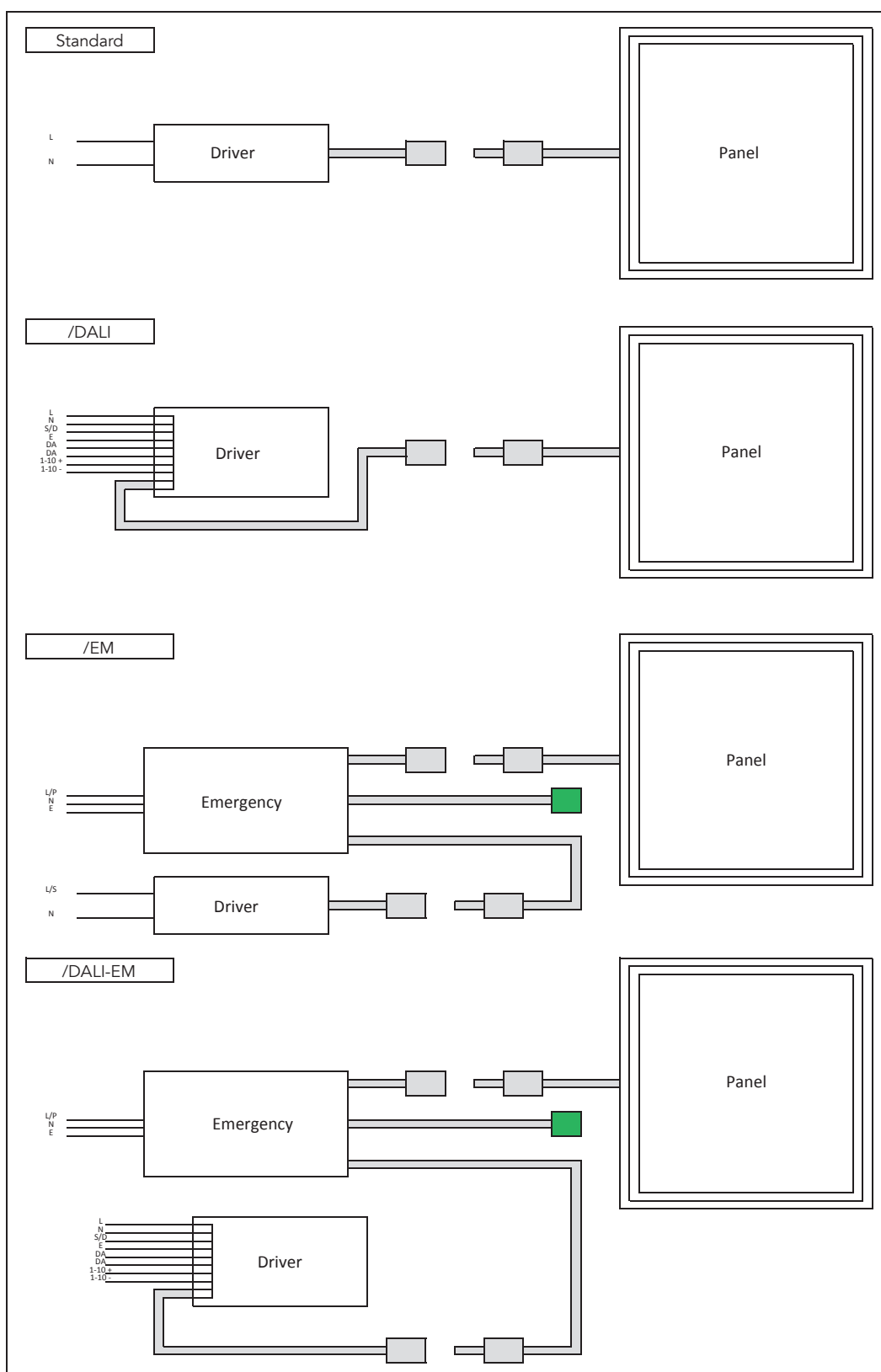
Electrical Data

Part Code	Input (W)	Input (V) ±10%	Input (Hz)	LED (W)	Input (A)	Electrical Class	Inrush (A) (Ipeak)	No. per C16	Forward (mA)	Forward (V)	Power Factor	THD (%)
AP-36-3K	40	220-240	50/60	36	0.19	2	60	48	1000	36	>0.9	<15
AP-36-4K	40	220-240	50/60	36	0.19	2	60	48	1000	36	>0.9	<15
AP-36-5K	40	220-240	50/60	36	0.19	2	60	48	1000	36	>0.9	<15
AP-36-6K	40	220-240	50/60	36	0.19	2	60	48	1000	36	>0.9	<15

Physical Data

Part Code	Lens Type	Case Material	Dimensions (mm)	Weight (kg)	Connector Type Input
AP-36-3K	Polycarbonate	Aluminium	595 x 595 x 10	3	Flying Lead with plug
AP-36-4K	Polycarbonate	Aluminium	595 x 595 x 10	3	Flying Lead with plug
AP-36-5K	Polycarbonate	Aluminium	595 x 595 x 10	3	Flying Lead with plug
AP-36-6K	Polycarbonate	Aluminium	595 x 595 x 10	3	Flying Lead with plug

Wiring



General Data

ECA Compliant	Yes
Energy Rating	A+
SDCM	<4

Safety Data

Short Circuit Protection	Yes
--------------------------	-----

Environmental Data

Max. Ambient (°C)	40
Min. Ambient (°C)	-10
IP Rating	IP40

Accessories

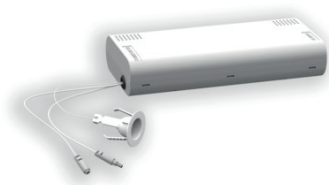
AP-013	3W LED Emergency Downlight
AP-018	3W Emergency Remote Pack
AP-057	Surface Mount Box for 600x600mm Panel



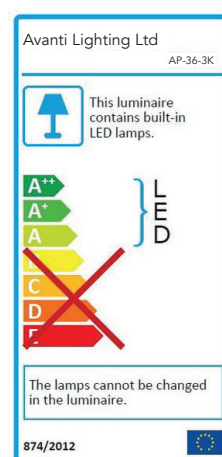
AP-36-3K / 4K / 5K / 6K



AP-013 - 3W LED Emergency Downlight



AP-018 - 3W Emergency Remote Pack



Emergency Rating Label